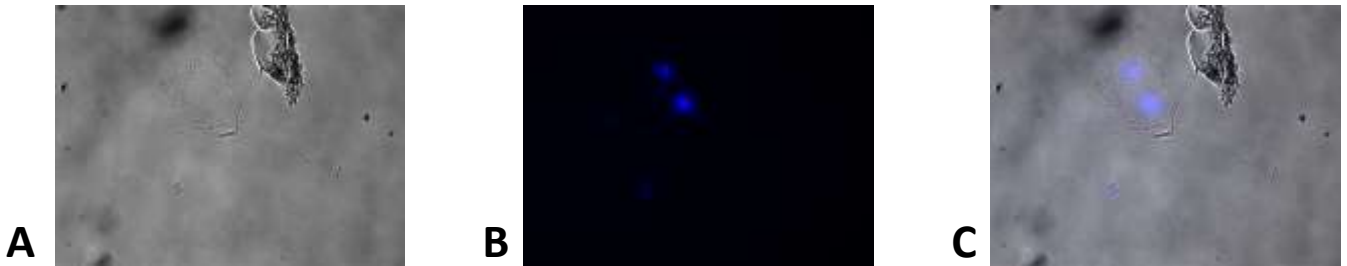


INTERACTION OF FLUORESCENT LABELED BACTERIOPHAGES PHIKZ P. AERUGINOSA WITH HUMAN ORAL EPITHELIAL CELLS FROM ORAL CAVITY SCRAPING

Galina Soboleva¹, Evgeniy Zhilenkov², Sergey Pchelintsev¹, Alexander Zurabov²

- 1) “Institute of immunological engineering” Open Joint-stock Company, *phone number: +7 (495) 996-15-55, Email: serg.pch@yandex.ru*
- 2) “Scientific-and-production Centre Micro-World” Limited Liability Company, *phone number: +7 (495) 625-32-65, Email: office@micro-world.ru*



Human oral epithelial cells incubated with fluorescent bacteriophages. A. Cells in transmitted light. B. Cells captured by fluorescence (excitation 350 nm, emission 460 nm). C. Merged A and B. In the middle and above one can see two adhered epithelial cells, to the right of them conglomerated destroyed cells are to be seen. The nuclei of both adhered cells are bright fluorescent. To the left and below several groups of weakly fluorescent bacteria are too be seen.